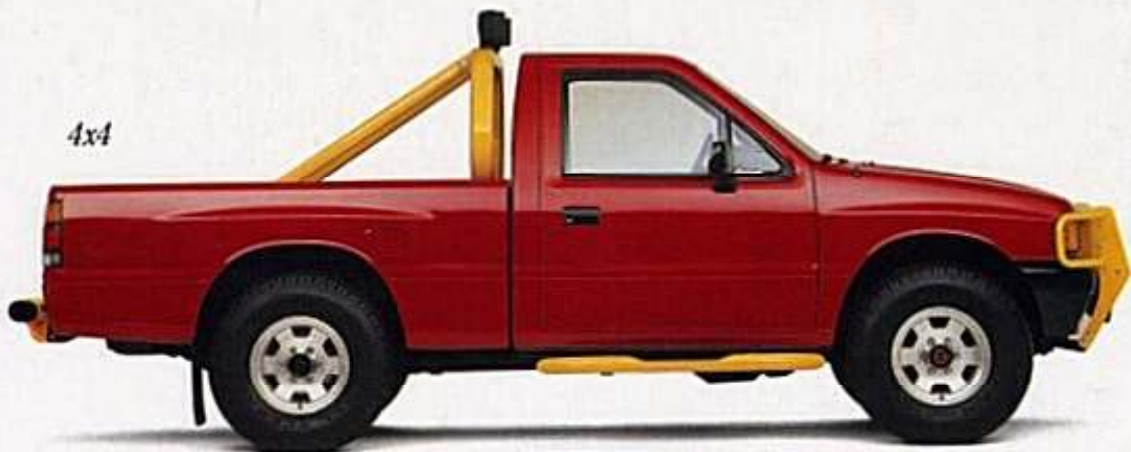
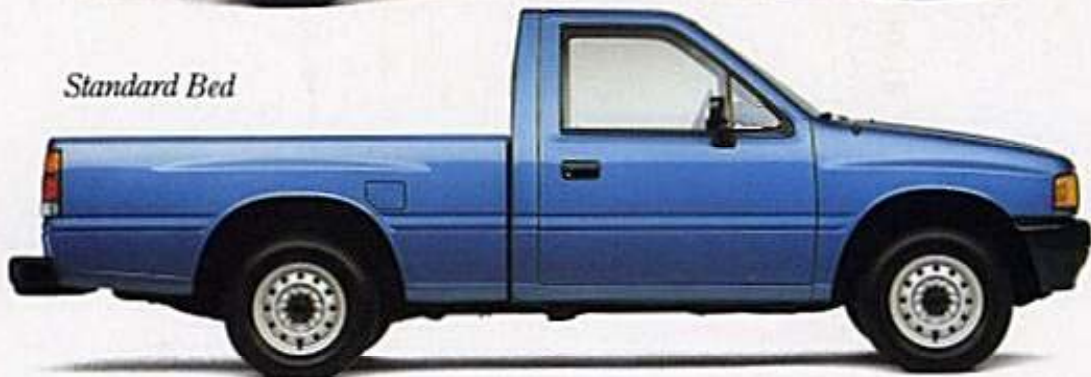


4x4



Standard Bed



Long Bed/1-Ton Long Bed



Spacecab



YOU DON'T BECOME JAPAN'S OLDEST TRUCK MAKER BY MAKING COMPROMISES.

When we built Japan's first trucks back in 1914, we started building something else. Our reputation. Today we've earned a world-wide reputation for engineering, performance, quality and value.

And this year, as in the seventy-four before, we plan to keep it that way.

ISUZU  ISUZU